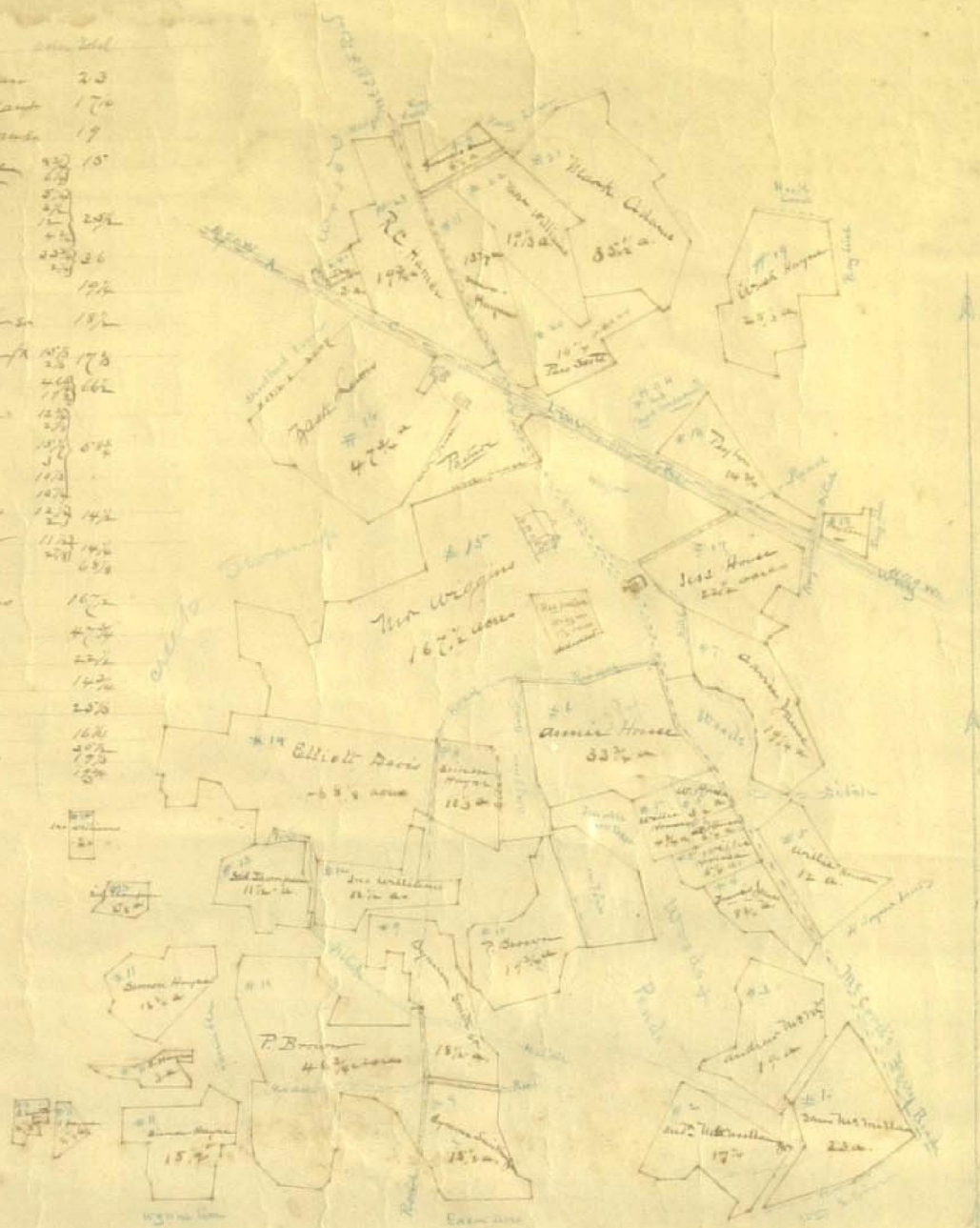


No.	Name	Acres
1	Sam'l McMillan	23
2	Wm D McMillan	17 1/2
3	Wm D McMillan	17
4	Francis House	15
5	Willie House	25 1/2
6	Ann's House	26
7	Carrie House	17 1/2
8	Byron's Garden	18 1/2
9	Byron's Garden	17 1/2
10	Fra Brown	16 1/2
11	Simon House	15 1/2
12	John Williams	14 1/2
13	Old Thompson	14 1/2
14	Wm Davis	13 1/2
15	Wiggins	12 1/2
16	Jack Lewis	11 1/2
17	Jess House	10 1/2
18	Payton	14 1/2
19	Wash Hayes	25 1/2
20	Tom Scott	16 1/2
21	Wm Williams	15 1/2
22	Wm Williams	15 1/2
23	E. J. House	15 1/2
24	John Hunter	15 1/2



The above is a survey of the fields of the tenants on the plantation of Herman Eck (known as the London lands) near Durham South Carolina township Broken Co. S.C. Surveyed at the request of Mr. R. C. Hanner - Jan 1912

Scale 10 chs per in.

J. T. Deary (502)